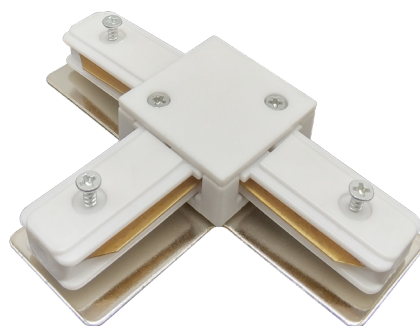


SEVA T Connector White



EDO777421



Connector SEVA T Connector White

Rail lighting is an innovative solution that gives an endless number of combinations, personalization possibilities and creating unique illumination of the room. The rail system is a whole set of elements- rails, connectors, power supplies and plugs.

SPECIFICATIONS EDO777421

Application:	inside
Connector type:	T shape
Type of system:	track SEVA
Type of assembly:	surface-mounted
Installation site:	ceiling
Colour:	white
Type of finish:	mat
Material:	aluminium, PC, steel
Dimensions:	
-width [mm]:	102mm
-height [mm]:	18mm
-length [mm]:	71mm

TECHNICAL DATA

Rated voltage [V]:	220-240 V AC
Rated frequency [Hz]:	50-60 Hz
Number of wires:	2
Number of phases:	1
Maximum load:	600W
IP:	IP20
Protection class:	I
Mercury content:	no
Environmental conditions [°C]:	-20...50°C

LOGISTIC DATA

Collective packaging [pc.]:	200pc
Weight with packaging [g]:	76g

EAN:



5190394314899301

